

Lanscan Plus

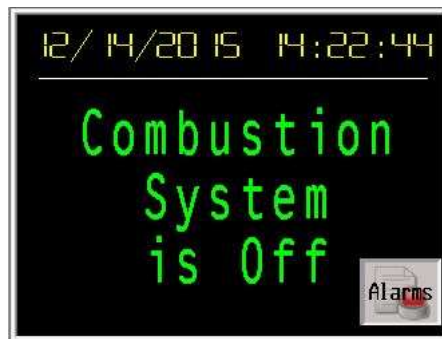
First Out Indicator – Diagnostics

The Lanscan Plus is the next generation of Lanly's system monitoring and diagnostics. The Lanscan Plus has more intelligence along with a video display for improved messaging and interface.

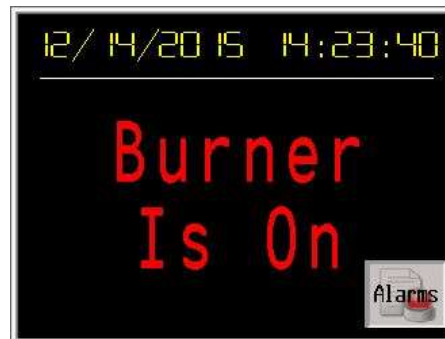
The Lanly Lanscan Plus first event annunciator reduces downtime and simplifies trouble-shooting.

As with earlier Lanscans, the Lanscan Plus will monitor system safety devices (pressure switches, air flow switches, flame safeguards, etc.) In the event of a shutdown, the Lanscan Plus will detect the device that caused the shutdown and display a message with the device and a time and date stamp.

First Out Indicator (On power up)



After oven is in operation and burner on.



When a fault occurs that causes the oven combustion system to shut down, the First Out Indicator will display the fault message along with the date and time of day the fault occurred. Once the fault is reset, the date and time stamp will be cleared. Pressing the "Alarms" button at any time will bring up the log of all alarms along with the number of times each alarm type has occurred.

Alarm Message



Alarm Log Screen



FEATURES

Lanscan Plus

APPLICATIONS

The Lanscan Plus is ideal for use with ovens, dryers, conveyors, machine tools, process control systems and automated handling systems.

BENEFITS

- Short scan time allows the unit to discriminate between fast occurring events
- Ideal for hard wired series string interlocks, including: Combustion system permissives, conveyor interlock circuits, HVAC systems (boilers, air handlers), automated material handling safety interlocks
- Multiple Zone Ovens – door space

OPERATION

The Lanscan annunciator senses the first contact that opens and directs the equipment operator to the basic cause of a malfunction, or the first event in a process sequence. The first event, whether intermittent, self-correcting or maintained, turns the appropriate fault message.

TYPICAL INTERLOCKS INCLUDE

- Limit Switches
- Pressure Sensors
- Flow Switches
- Level Detectors
- Temperature Sensors
- Flame Safeguards
- Humidity Sensors
- Gas Detectors
- Relay Contacts
- Operator Devices



The Lanly Company

26201 Tungsten Road

Cleveland, OH 44132

Phone: (216) 731-1115 Fax: (216) 731-7900

Email: lanly@lanly.com

Web: www.lanly.com